



INSTALLATION INSTRUCTIONS

77-3031

Chevrolet/GMC

2001-06 Silverado 2500HD; 3500

2001-06 Sierra 2500HD; 3500

2007 Silverado 2500HD Classic; 3500 Classic

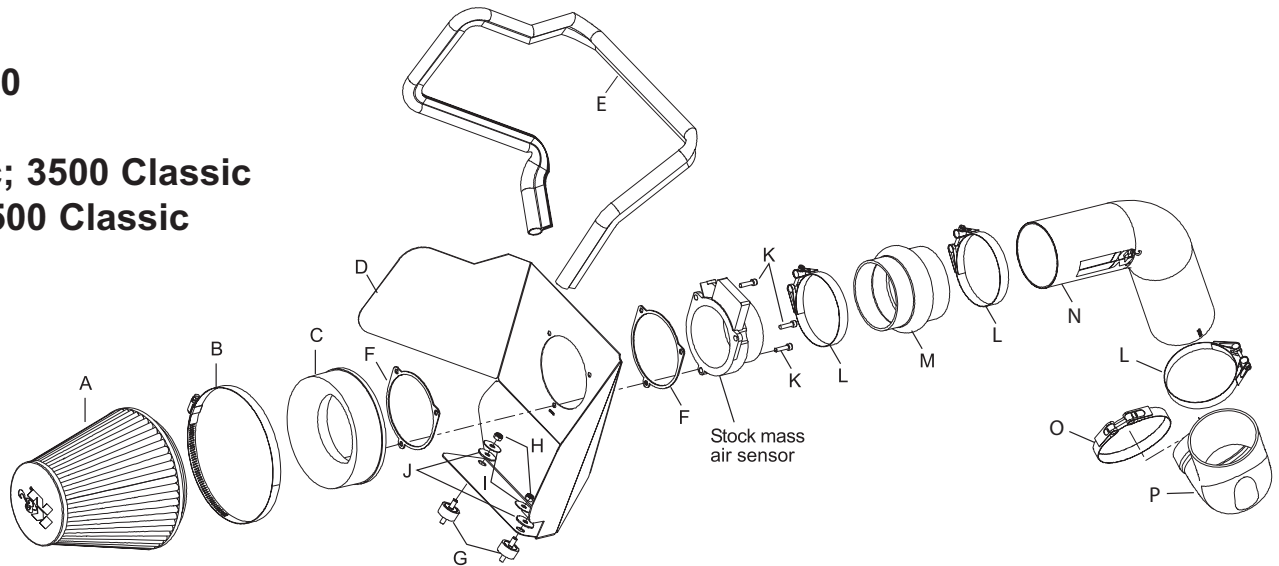
2007 Sierra 2500HD Classic; 3500 Classic

V8-6.0L

NOTE: EO#D-269-34 APPLIES ONLY TO 2001-06 MODELS

TOOLS NEEDED:

- | | |
|------------------------|-------------|
| Flat Blade Screwdriver | 10mm wrench |
| Phillips Screwdriver | Ratchet |
| Pliers | Extension |
| 3mm Allen Wrench | 10mm Socket |
| 4mm Allen Wrench | |



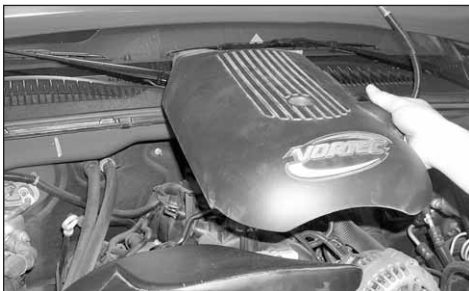
Parts List

A	Air filter	1	RC-5046	F	Gasket	2	09033	K	5mm Allen Bolt, 20mm L	3	08320	P	Silicone Angled Hose	1	084053
B	Hose Clamp, #104	1	08697	G	6mm Rubber Mounted Stud	2	07027	L	Hose Clamp, #56	3	08620				
C	Mass Air Adapter	1	08783	H	6mm Nylock Nut, SS	2	07512	M	Silicone Hump Hose	1	084056				
D	Heat Shield	1	07316	I	Fender Washer	2	08160	N	Performance Intake Tube	1	27353				
E	Edge Trim, 3/4" Bulb, 48" L,	1	102485	J	Rubber Washer	2	21685	O	Hose Clamp, #64	1	08645				

NOTE: FAILURE TO FOLLOW INSTALLATION INSTRUCTIONS AND NOT USING THE PROVIDED HARDWARE MAY DAMAGE THE INTAKE TUBE, THROTTLE BODY AND ENGINE.

TO START:

1. Turn the ignition OFF and disconnect the vehicle's negative battery cable.



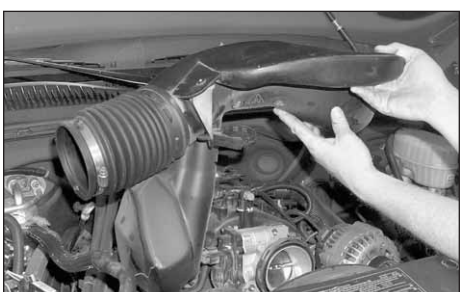
2. Remove the bolt that secures the engine cover, then, remove the engine cover as shown.



3. Disconnect the mass air sensor electrical connection as shown.



4. Unclip the radiator hose from the stock intake tube as shown.



5. Loosen the hose clamps at the throttle body and at the mass air sensor, then remove the stock intake tube as shown.

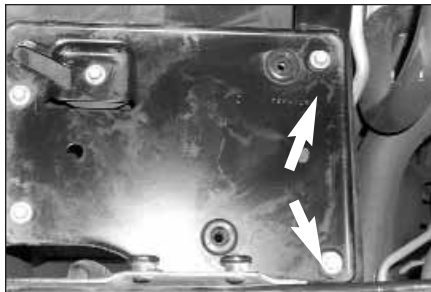


6. Pull firmly upwards to remove the air cleaner assembly as shown.

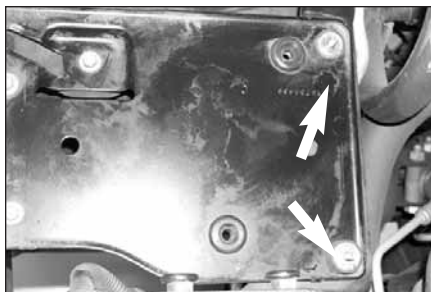
NOTE: K&N recommends that you do not discard your factory air intake.



7. Loosen the hose clamp on the air cleaner then remove the mass air sensor as shown.



8. Remove the two stock air cleaner support tray bolts as shown.



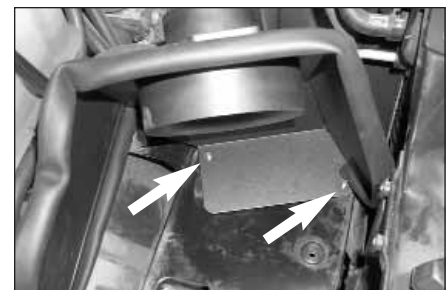
9. Install the rubber mounted studs as shown and tighten firmly by hand.



10. Install the edge trim onto the heat shield as shown.



11. Using the provided hardware assemble the mass air adapter, heat shield, gaskets and the stock mass air sensor as shown.



12. Install the heat shield onto the rubber mounted studs as shown.



13. Secure the heat shield to the rubber mounted studs using the provided hardware but do not tighten at this time.



14. Install the silicone angled hose and hose clamps onto the throttle body but do not tighten at this time.



15. Install the silicone step hump hose and hose clamps onto K&N Performance Intake Tube as shown.



16. Install the K&N intake tube into the angled hose, then, slide the other end into the hump hose. Adjust everything for best fit and clearance and tighten all hose clamps as shown.



17. Tighten the hardware on the heat shield as shown.



18. Install the K&N Air filter onto the mass air adapter and secure it with the provided hose clamp as shown.



19. Reconnect the mass air sensor electrical connection as shown.



20. Reinstall the engine cover and secure it with the stock hex bolt.



21. Reconnect the negative battery cable and double check to make sure everything is tightened and properly positioned before starting the vehicle.

22. The C.A.R.B. exemption sticker, (attached), must be visible under the hood so that an emissions inspector can see it when the vehicle is required to be tested for emissions. California requires testing every two years, other states may vary.

23. It will be necessary for all Performance Intake Kits to be checked periodically for realignment, clearance and tightening of all connections. Failure to follow the above instructions or proper maintenance may void warranty.

ROAD TESTING:

1. Start the engine with the transmission in neutral or park, and the parking brake engaged. Listen for air leaks or odd noises. For air leaks secure hoses and connections. For odd noises, find cause and repair before proceeding. This kit will function identically to the factory system except for being louder and much more responsive.

2. Test drive the vehicle. Listen for odd noises or rattles and fix as necessary.

3. If road test is fine, you can now enjoy the added power and performance from your kit.

4. K&N suggests checking the Air filter element periodically for excessive dirt build-up. When the element becomes covered in dirt (or once a year), service it according to the instructions on the Recharger service kit, part number 99-5000 or 99-5050.

STREET LEGAL IN MOST STATES
NOT LEGAL FOR USE IN CA & OTHER STATES
ADOPTING CA EMISSIONS STANDARDS

See our catalog or knfilters.com for CARB status on each part for a specific vehicle

FREE K&N DECAL To register your warranty, please see us online at knfilters.com/register. FREE K&N DECAL