

TYPHOON INTAKE SYSTEMS

BY 

INSTALLATION INSTRUCTIONS

69-8400

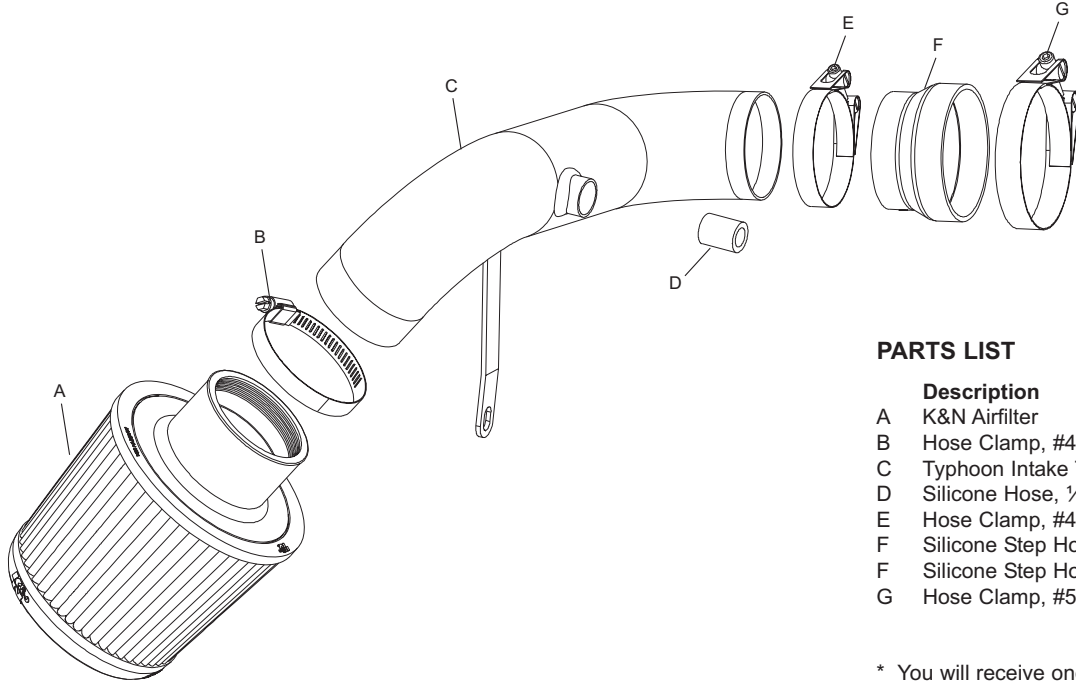
Suzuki

2002-03 Aerio

L4-2.0L All

TOOLS NEEDED:

Flat blade screw driver
Ratchet
14" extension
10mm socket
12mm end wrench



PARTS LIST

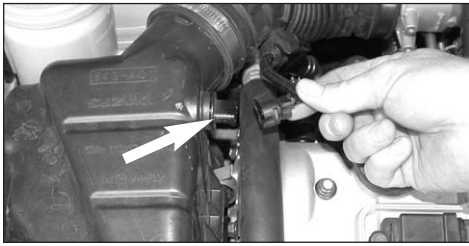
	Description	Qty.	P/N
A	K&N Airfilter	1	KRU-4960E
B	Hose Clamp, #44	1	08560
C	Typhoon Intake Tube	1	27113
D	Silicone Hose, 1/2" ID x 1" L.	1	084054
E	Hose Clamp, #40	1	08554
F	Silicone Step Hose, Blue	1	084033*
F	Silicone Step Hose, Black	1	084034*
G	Hose Clamp, #52	1	08610

* You will receive one blue or one black Silicone Step Hose depending on the color of the kit ordered

NOTE: FAILURE TO FOLLOW INSTALLATION INSTRUCTIONS AND NOT USING THE PROVIDED HARDWARE MAY DAMAGE THE INTAKE TUBE, THROTTLE BODY AND ENGINE.

TO START:

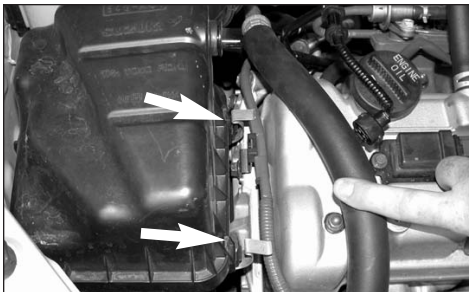
1. Turn the ignition OFF and disconnect the vehicle's negative battery cable.



2. Disconnect the air temperature sensor electrical connection as shown.



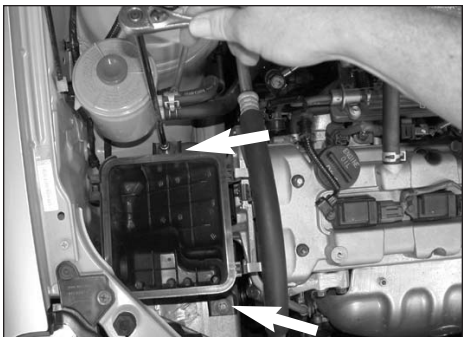
3. Loosen the hose clamp at the throttle body as shown.



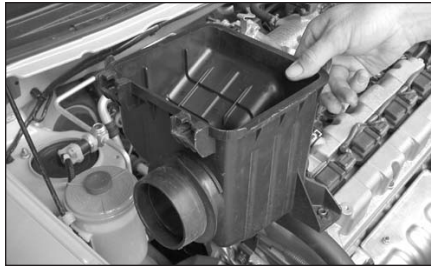
4. Unclip the upper air cleaner assembly as shown.



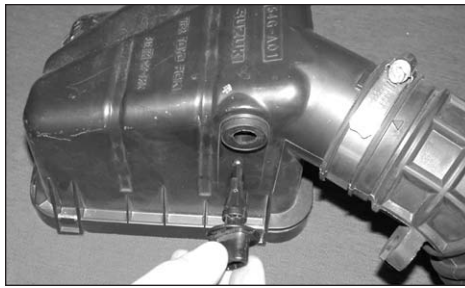
5. Pull the stock intake hose off the throttle body and remove the upper air cleaner assembly as shown.



6. Remove the two bolts that secure the lower air cleaner assembly.



7. Remove the lower air cleaner assembly as shown. **NOTE: K&N recommends that customers do not discard factory air intake.**



8. Remove the air temperature sensor from the upper air cleaner assembly as shown.



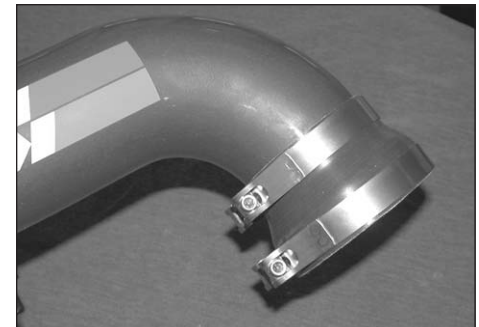
9. Remove the bolt that secures the wire harness bracket to the engine mount bracket as shown.



10. Install the silicone hose into the vent on the Typhoon intake tube as shown. **NOTE: Before installing the silicone hose, inspect the inside of the tube for any debris, then clean the inside out with water and a towel. Inspect the tube one more time before proceeding to the next step.**



11. Install the air temperature sensor into the silicone hose on the Typhoon intake tube as shown.



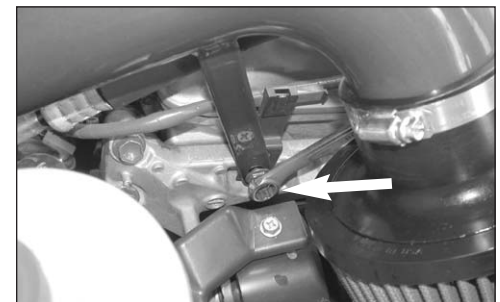
12. Install the silicone hose and hose clamps onto the K&N Typhoon intake tube as shown.



13. Install the K&N X-Stream air filter onto the Typhoon intake tube as shown.



14. Install the Typhoon intake tube assembly onto the throttle body as shown.



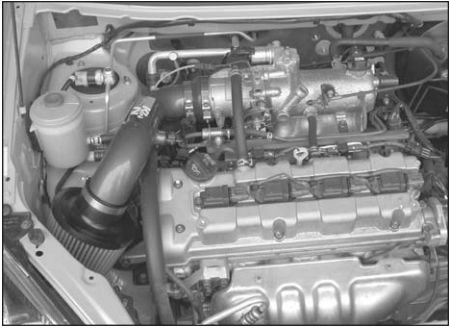
15. Line up the bracket with the threaded hole from step 9 and secure with the stock bolt from step 9.



16. Tighten the hose clamp on the throttle body as shown.



17. Reconnect the air temperature sensor electrical connection as shown



18. Re-connect the negative battery cable and double check that everything is tight and properly positioned before starting the vehicle.

19. The C.A.R.B. exemption sticker, (attached), must be visible under the hood, so that an emissions inspector can see it when the vehicle is required to be tested for emissions. California requires testing every two years, other states may vary.

20. It will be necessary for all Typhoon's to be checked periodically for realignment, clearance and tightening of all connections. Failure to follow the above instructions or proper maintenance may void warranty.

ROAD TESTING:

1. Start the engine with the transmission in neutral or park, and the parking brake engaged. Listen for air leaks or odd noises. For air leaks secure hoses and connections. For odd noises, find cause and repair before proceeding. This kit will function identically to the factory system except for being louder and much more responsive.

2. Test drive the vehicle. Listen for odd noises or rattles and fix as necessary.

3. If road test is fine, you can now enjoy the added power and performance from your kit.

4. K&N suggests checking the air filter element periodically for excessive dirt build-up. When the element becomes covered in dirt (or once a year), service it according to the instructions on the Recharger service kit, part number 99-5000 or 99-5050.

FREE K&N DECAL To register your warranty, please see us online at knfilters.com/register. FREE K&N DECAL