



TYPHOON INTAKE SYSTEMS

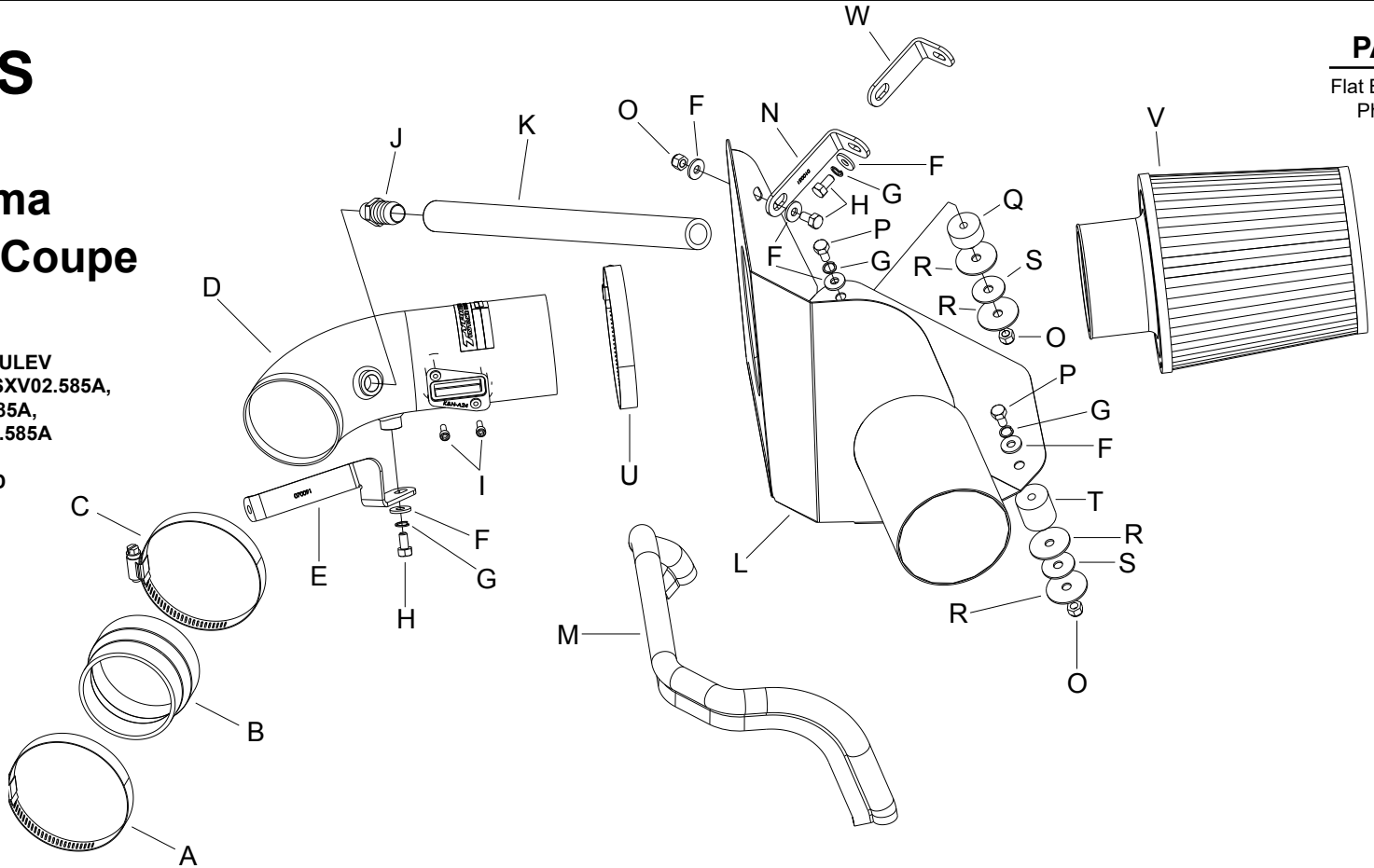
LEGAL IN CALIFORNIA ONLY FOR RACING VEHICLES WHICH MAY NEVER BE USED, REGISTERED OR LICENSED FOR USE UPON A HIGHWAY. See knfilters.com for CARB status on each part for a specific vehicle

INSTALLATION INSTRUCTIONS

69-7061TS NISSAN 2007-12 Altima 2013 Altima Coupe L4-2.5L

NOTE: EXCLUDING LEV2 SULEV
2007-11 TEST GROUPS 7NSXV02.585A,
8NSXV02.585A, 9NSXV02.585A,
ANSXV02.585A & BNSXV02.585A

NOTE: EXCLUDING HYBRID



PARTS LIST:

Flat Blade Screwdriver
Phillips Screwdriver
Ratchet
Extension
8mm Socket
10mm Socket
3mm Allen
5mm Allen
10mm Wrench

PARTS LIST:

Description	Qty.	Part #	Description	Qty.	Part #	Description	Qty.	Part #
A HOSE CLAMP; #40	1	08554	I BOLT; M4-.7 X 8MM	2	07733	Q STUD; RUBBER	1	070228
B HOSE; 3" TO 2.75"ID X 2"L	1	084036	J FITTING; VENT, 1/4"NPT	1	82638	R WASHER; 1.25"OD X .28	4	08151
C HOSE CLAMP; #44	1	08560	K HOSE; 5/8"ID X 14"L	1	084083	S WASHER; 1" X .300 X .063	2	21685
D INTAKE TUBE; (SILVER)	1	27520TS	L HEAT SHIELD	1	07691	T STUD; RUBBER MOUNT	1	02033
E BRACKET; "L"	1	070091	M EDGE TRIM; 20"L	1	102494A	U HOSE CLAMP; #52	1	08610
F WASHER; 1/4"ID X 5/8"OD	6	08275	N BRACKET; "L"	1	010051A	V AIR FILTER	1	RU-4990
G WASHER; 1/4" LOCK	4	08198	O NUT; 6MM NYLOCK	3	07512	X BRACKET; SMALL	1	070015
H BOLT; M6-1 X 16MM	3	07812	P BOLT; M6 X 1 X 12MM	2	07727			

If you need any assistance please call 1-800-858-3333 to speak with a representative in our Customer Service Center before returning the product.

NOTE: FAILURE TO FOLLOW INSTALLATION INSTRUCTIONS AND NOT USING THE PROVIDED HARDWARE MAY DAMAGE THE INTAKE TUBE, THROTTLE BODY AND ENGINE.

TO START:

1. Turn off the ignition and disconnect the negative battery cable.
NOTE: Disconnecting the negative battery cable erases pre-programmed electronic memories. Write down all memory settings before disconnecting the negative battery cable. Some radios will require an anti-theft code to be entered after the battery is reconnected. The anti-theft code is typically supplied with your owner's manual. In the event your vehicles anti-theft code cannot be recovered, contact an authorized dealership to obtain your vehicles anti-theft code.



2. Disconnect the mass air sensor electrical connection and then unhook the wiring harness clips from the air box.



3. Remove three bolts which secure the engine cover and then remove the engine cover.



5. Remove the fresh air inlet assembly from the air box and radiator core support.



6. Release crank case vent hose spring clamp and then disconnect the crank case vent hose from the intake tube.



7. Loosen the hose clamp which secures the intake hose to the throttle body and remove the air box mounting bolt.
NOTE: The mounting bolt is located next to the strut tower towards the bottom of the air box.



8. Remove the air box assembly from the vehicle.
NOTE: K&N Engineering, Inc., recommends that customers do not discard factory air intake.



9. Remove the two rubber air box mounting grommets shown.



10. Install the 1.0" high rubber mounted stud onto the front air box mounting location using the provided hardware.



11. Install the 1/2" high rubber mounted stud onto the rear air box mounting location using the provided hardware.



12. Remove the lower-front throttle body mounting bolt.
NOTE: This bolt will be reused in the next step.



13. Install the tube mounting bracket (070091) onto the throttle body using the bolt removed in the previous step.



14. Install the provided silicone hose (084036) onto the throttle body and secure with the provided hose clamp.



15. Install the provided 1/4" npt vent fitting into the K&N® Intake Tube as shown.
NOTE: NPT fitting has tapered threads and only designed to be installed until hand tight, then tighten one rotation or when the fitting becomes difficult to return.



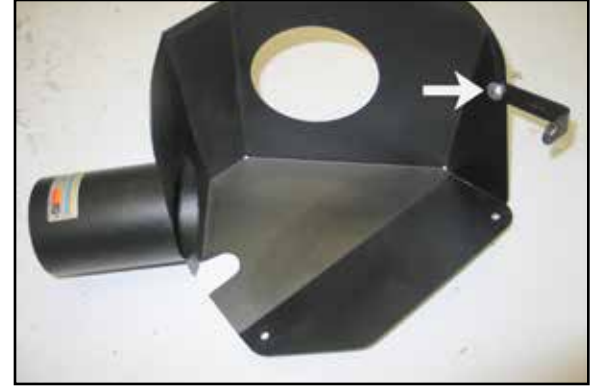
16. Remove the two bolts which secure the mass sensor to the intake tube and remove the mass air sensor as shown.



17. Install the mass air sensor into the K&N® intake tube and secure with the provided hardware.



18. Install the K&N® intake tube into the silicone hose at the throttle body and align with the mounting bracket. Secure with the provided hardware and hose clamp.



19. Install the heat shield mounting bracket (010051) onto the heat shield as shown using the provided hardware.
NOTE: On vehicles equipped with manual transmissions use bracket (070015)



20. Install the provided edge trim onto the heat shield as shown.
NOTE: Some trimming of the edge trim will be necessary.



21. Install the heat shield into the vehicle so the mounting holes line up with the rubber mounted studs installed earlier. Secure the heat shield and mounting bracket with the hardware provided.



22. Reinstall the fresh air inlet supply to the original location and into the fresh air tube on the heat shield then secure with the factory bolts.



23. Install the factory crank case vent hose to the 1/4" npt vent installed onto the K&N® intake tube.



24. Reconnect the mass air sensor electrical connection.



25. Install the K&N® air filter onto the K&N® intake tube and secure with the provided hose clamp.
NOTE: Drycharger® air filter wrap; part # RU-4990DK is available to purchase separately. To learn more about Drycharger® filter wraps or look up color availability please visit <http://www.knfilters.com>®.



26. Reinstall the engine cover and secure with the factory bolts.



27. Reconnect the vehicle's negative battery cable. Double check to make sure everything is tight and properly positioned before starting the vehicle.

28. This K&N® high flow intake system has been designed to be used in two different configurations. In the case of inclement weather, the cold air tube can be removed and the air filter can be clamped onto the intake tube located in the engine compartment to avoid the possibility of ingesting water into the engine.

NOTE: If you have any concerns, return the vehicle to stock using the factory equipment.

29. The C.A.R.B. exemption sticker, (attached), must be visible under the hood so that an emissions inspector can see it when the vehicle is required to be tested for emissions. California requires testing every two years, other states may vary.

30. It will be necessary for all K&N® high flow intake systems to be checked periodically for realignment, clearance and tightening of all connections. Failure to follow the above instructions or proper maintenance may void warranty.

ROAD TESTING:

1. Start the engine with the transmission in neutral or park, and the parking brake engaged. Listen for air leaks or odd noises. For air leaks secure hoses and connections. For odd noises, find cause and repair before proceeding. This kit will function identically to the factory system except for being louder and much more responsive.

2. Test drive the vehicle. Listen for odd noises or rattles and fix as necessary.

3. If road test is fine, you can now enjoy the added power and performance from your kit.

4. K&N Engineering, Inc., requires cleaning the intake system's air filter element every 100,000 miles. When used in dusty or off-road environments, our filters will require cleaning more often. We recommend that you visually inspect your filter once every 25,000 miles to determine if the screen is still visible. When the screen is no longer visible some place on the filter element, it is time to clean it. To clean and re-oil, purchase our filter Recharger® service kit, part number 99-5050 or 99-5000 and follow the easy instructions.

LEGAL IN CALIFORNIA ONLY FOR RACING VEHICLES WHICH MAY NEVER BE USED, REGISTERED OR LICENSED FOR USE UPON A HIGHWAY.

See knfilters.com for CARB status on each part for a specific vehicle