

Warning: Please follow these installation instructions carefully. The K&N Drycharger included in this kit must be installed on the K&N air filter when used with a K&N Typhoon Cold Air Intake System. The K&N Typhoon Intake System is a performance product that can be used safely during mild weather conditions. During hard and inclement weather conditions, you must convert your Cold Air Intake System into a short ram configuration, or return your vehicle to the stock OEM airbox and intake tract configuration. Failure to follow these instructions can void your warranty.

INSTALLATION INSTRUCTIONS

69-1500
Honda Accord Type R
1998-2002
2.2L L4 16v, 212 PS

Tools Needed:

10 mm Socket and extension
Ratchet
10 mm Spanner
Side cutting pliers
Flat blade screwdriver
Phillipshead screwdriver
Lifting Jack
Pair of Axle Stands

TO START:

1. Turn the ignition OFF and disconnect the vehicle's negative battery terminal.



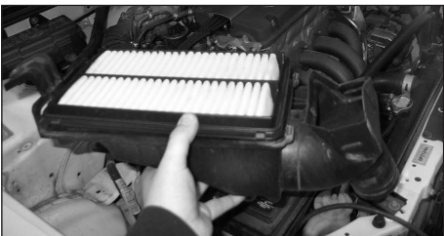
2. Remove the small vacuum hose from the intake snorkel as shown.



3. Remove intake snorkel from the vehicle as shown.



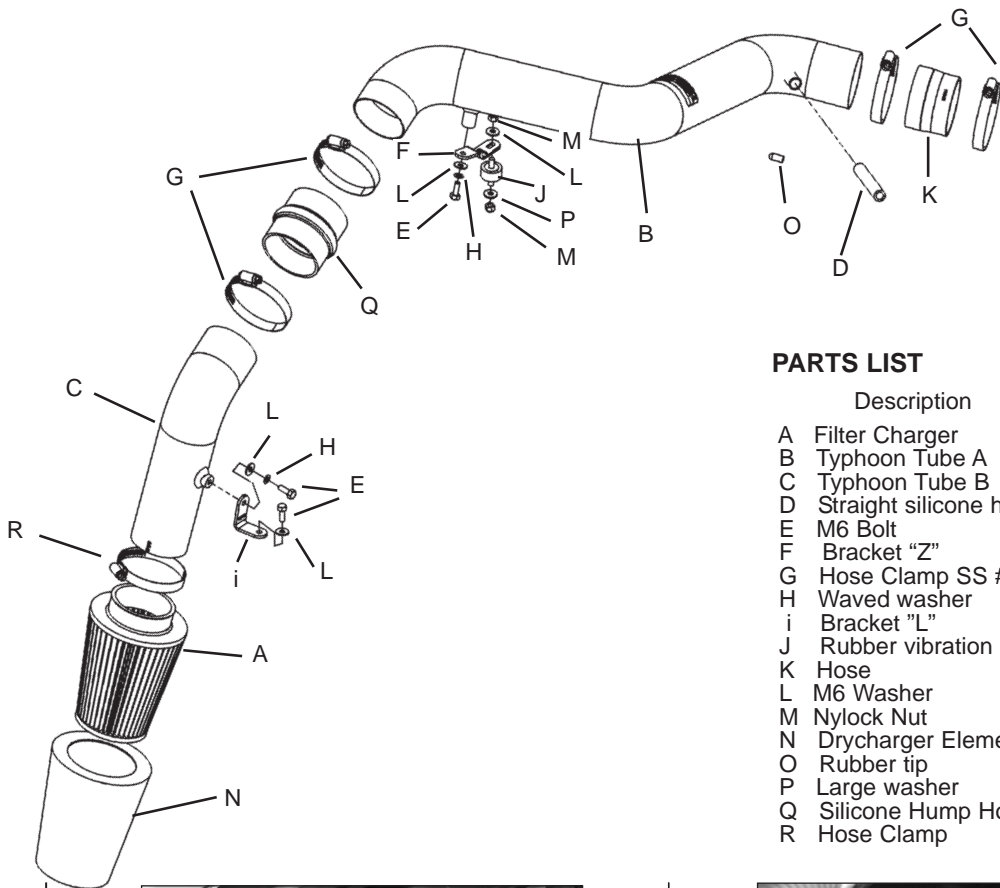
4. Unclip and remove the air box lid from the vehicle.



5. Unbolt and remove the air box base from the vehicle.



6. Unclip and remove the breather pipe from the intake hose as shown.



PARTS LIST

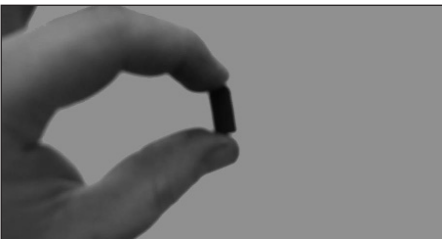
	Description	Qty.	P/N
A	Filter Charger	1	RC-9310
B	Typhoon Tube A	1	27109
C	Typhoon Tube B	1	27175
D	Straight silicone hose	1	08462
E	M6 Bolt	3	07703
F	Bracket "Z"	1	06435
G	Hose Clamp SS #44	4	08560
H	Waved washer	2	08277
i	Bracket "L"	1	06434
J	Rubber vibration stud	1	07027
K	Hose	1	084014
L	M6 Washer	4	08269
M	Nylock Nut	2	07512
N	Drycharger Element	1	RC-9310DK
O	Rubber tip	1	08282
P	Large washer	1	08275
Q	Silicone Hump Hose	1	08439
R	Hose Clamp	1	08577



7. Unclip the small vacuum hose from the intake hose as shown.



8. Unclip and remove the complete intake hose from the vehicle.



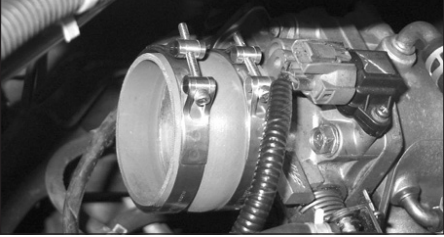
9.Remove the vacuum hose (shown in step 7) from the vacuum switch and replace it with the rubber tip supplied.



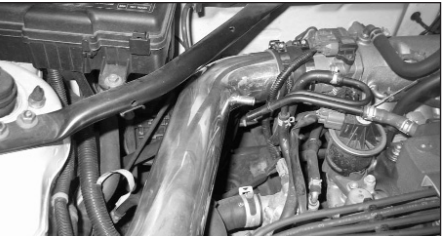
10. Mount the rubber stud onto the engine support bracket using a large washer and M6 nut supplied as shown.



11. Mount the "Z" bracket onto the rubber stud using a washer and M6 nut supplied. (do not fully tighten at this moment.)



12. Mount the silicone hose onto the throttle body using the hose clamp supplied.



13. Feed the new tube into the sleeve.
NOTE: Before installing clean the inside of out with water and a towel!



14. Secure the A- tube onto the "L" bracket using a washer, waved washer and M6 bolt supplied. (do not fully tighten at this moment.)

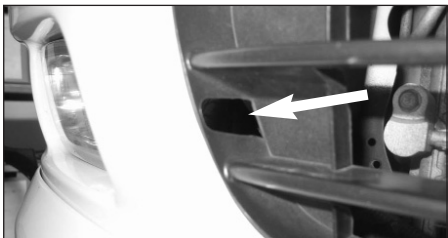


15. Taking all safety precautions and following manufacturer's instructions, carefully jack up the front of the vehicle and support it with axle stands. Now remove the wheel arch liner from the vehicle as shown.



16. Remove the bolt that secures the resonator box to the vehicle.

Continued on reverse side!



17. Remove the bolt that secures the foglight to the bumper which you can reach trough the front bumper grille as shown. Remove the fog light.



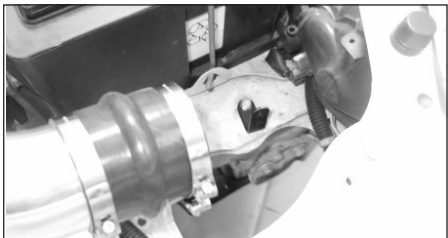
18. Remove the bolt that secures the resonator to the vehicle and remove the complete resonator box.



19. Re-install the fog light to the bumper.
NOTE: Re-adjust the fog light as necessary to avoid blinding oncoming traffic!



20. Fit the L-bracket to the inner fender using an M6 bolt and flat metal washer supplied. Make sure the short leg of the "L" sits on the fender. (don't fully tighten yet!)



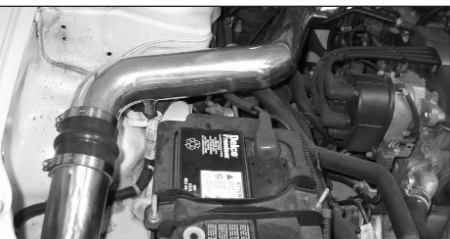
21. Mount the silicone hump hose onto the A-tube using a hose clamp supplied.



22. Feed the B-tube into the sleeve using a hose clamp supplied. (do not fully tighten at this moment.) **NOTE:** Before installing clean the inside of out with water and a towel!



23. Secure the B tube onto the L bracket using a washer, waved washer and M6 bolt supplied. (do not fully tighten at this moment.)



24. Align the A and the B tubes for maximum clearance, now tighten all hose clamps, bolts and nuts.



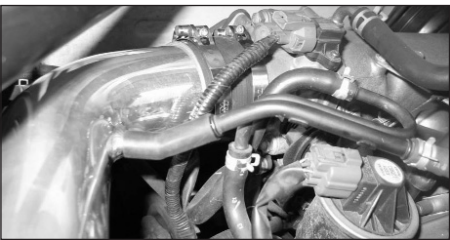
25. Fit the drycharger onto the filter as shown.
NOTE: The Drycharger's water repellant properties will last up to two years. See the parts list to re-order Drycharger if necessary.



26. Mount the filter onto the B tube using the # 44 hose clamp supplied.



27. Re-install the wheel arch liner back onto the vehicle.



28. Mount the supplied breather hose onto the new tube and the breather pipe as shown. (trim hose if necessary.)



29. Reconnect the negative battery terminal. Installation is now complete.



30. This Typhoon kit has been designed to be used in two different configurations. In case of inclement weather, the filter element can be clamped directly onto the A-tube to prevent water ingestion.

31. Double check to make sure everything is tight and properly positioned before starting the vehicle.

32. It will be necessary for all Typhoons to be checked periodically for realignment, clearance and tightening of all connections. Failure to follow the above instructions or proper maintenance may void warranty.



ROAD TESTING:

1. Start the engine with the transmission in neutral or park, and the parking brake engaged. Listen for air leaks or odd noises. For air leaks secure hoses and connections. For odd noises, find cause and repair before proceeding. This kit will function identically to the factory system except for being louder and much more responsive.

2. Test drive the vehicle. Listen for odd noises or rattles and fix as necessary.

3. If road test is fine, you can now enjoy the added power and performance from your kit.

4. K&N suggests checking the Filtercharger element periodically for excessive dirt build-up. When the element becomes covered in dirt (or once a year), service it according to the instructions on the Recharger service kit available from your K&N dealer, part number 99-5000 or 99-5050