



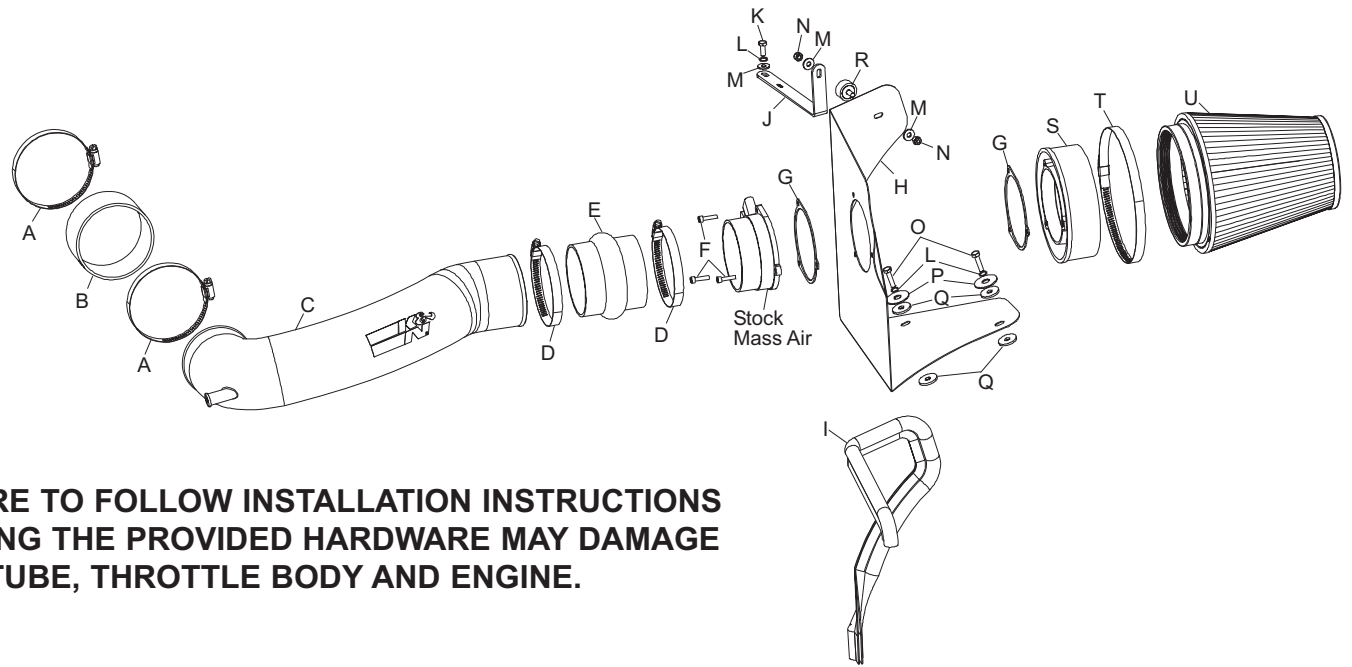
AIRCHARGER®

INSTALLATION INSTRUCTIONS

63-3053
PONTIAC
2006 GTO
V8-6.0L

TOOLS NEEDED:

Flat Blade Screwdriver
Ratchet
Extension
10mm Socket
10mm Wrench
4mm Allen Wrench
T-30 Torx Socket



NOTE: FAILURE TO FOLLOW INSTALLATION INSTRUCTIONS AND NOT USING THE PROVIDED HARDWARE MAY DAMAGE THE INTAKE TUBE, THROTTLE BODY AND ENGINE.

PARTS LIST:

Desc.	Qty.	Part #	Desc.	Qty.	Part #	Desc.	Qty.	Part #
A hose clamp #64	2	08645	G gasket; mass air sensor	2	09033	M washer; 5/8"od x 1/4"td flat	3	08275
B hose; 4"td x 2"L, silicone	1	08625	H heat shield	1	074041	N nut; 6mm nylock	2	07553
C intake tube (FA)	1	087170	I edge trim 27"	1	102489	O bolt; 6mm-1.00 x 25mm, hex	2	07704
D hose clamp #56	2	08620	J bracket; "L"	1	07091	P washer; 1.25"odx1/4"tdx.062"thk	2	08160
E hose; 3.63"td x 3.38"L hump	1	08176	K bolt; 6mm-1.00 x 16mm hex	1	07703	Q washer; 1 x .300" x .100" rubber	4	21685
F bolt; m5-.80 x 20mm, allen	3	08320	L washer; 1/4" split lock	3	08198	R stud; rubber mounted	1	07027
						S adapter; filter mass air #240	1	08783
						T hose clamp #104	1	08697
						U air filter	1	RF-1048

TO START:

1. Turn the ignition OFF and disconnect the vehicle's negative battery cable.



2. Release the center pin on the five radiator cover clips, Then remove the clips from the radiator cover.



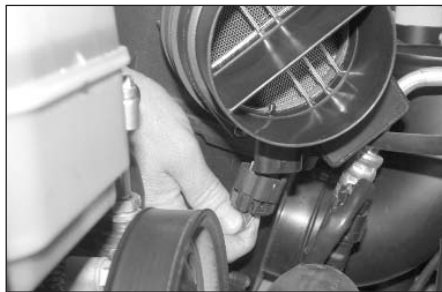
3. Lift up on the radiator cover and pull back to release from the retaining hook, then remove the cover from the vehicle.



4. Disconnect the crank case vent hose from the factory intake tube as shown.



5. Loosen the two intake tube hose clamps, then remove the intake tube from the vehicle.

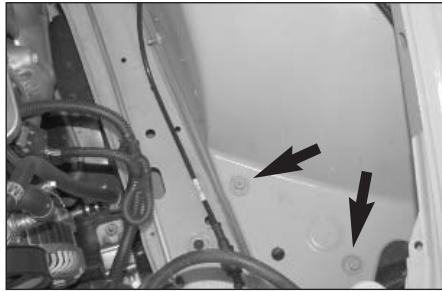


6. Release the mass air sensor electrical connection clip, then disconnect the electrical connection.



7. Pull up on the air box assembly to dislodge it from the three mounting pins and then remove the air box from the vehicle as shown.

NOTE: K&N recommends that you do not discard your factory air intake.



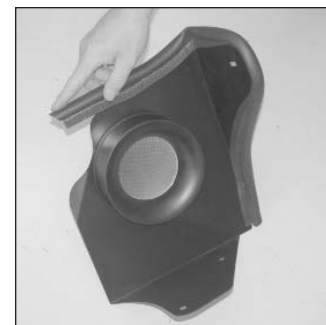
8. Remove the three air box mounting pins shown with a T-30 torx socket.



9. Loosen the hose clamp that secures the mass air sensor to the factory air box, then remove the mass air sensor from the factory air box.

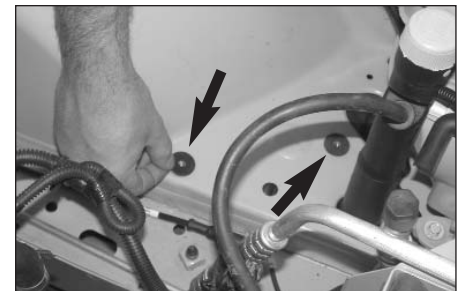


10. Assemble the heat shield and mass air sensor assembly with the provided hardware and gaskets as shown.



11. Install the edge trim onto the heat shield as shown.

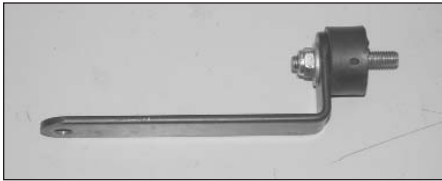
NOTE: Some trimming of the edge trim may be necessary.



12. Place the two rubber washers onto the inner fender at the lower air box mounting pin locations as shown.



13. Install the heat shield assembly onto the inner fender and start the mount bolts in the air box mounting pin holes, then place the air filter into position. Tighten the heat shield mounting bolts and then install the air filter onto the filter adapter and secure with the provided hose clamp.



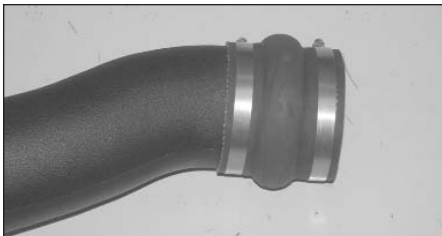
14. Install the rubber-mounted stud onto the heat shield mounting bracket (07091) as shown and secure with the provided hardware.



15. Install the heat shield mounting bracket onto the heat shield as shown and then secure the bracket to the inner fender at the upper air box mounting pin location as shown with the provided hardware.



16. Install the silicone hose (08625) onto the throttle body and secure with the provided hose clamps as shown.



17. Install the silicone hump hose (08176) onto the intake tube as shown and secure with the provided hose clamps as shown.



18. Install the K&N intake tube onto the throttle body and mass air sensor and secure with the provided hose clamps as shown.



19. Install the crankcase vent hose onto the K&N intake tube as shown.



20. Reinstall the radiator cover and the five mounting clips removed in step #2.



21. Reconnect the mass air sensor electrical connection.



22. Reconnect the vehicle's negative battery cable. Double check to make sure everything is tight and properly positioned before starting the vehicle.

23. It will be necessary for all Aircharger's to be checked periodically for realignment, clearance and tightening of all connections. Failure to follow the above instructions or proper maintenance may void warranty.

ROAD TESTING:

1. Start the engine with the transmission in neutral or park, and the parking brake engaged. Listen for air leaks or odd noises. For air leaks secure hoses and connections. For odd noises, find cause and repair before proceeding. This kit will function identically to the factory system except for being louder and much more responsive.
2. Test drive the vehicle. Listen for odd noises or rattles and fix as necessary.
3. If road test is fine, you can now enjoy the added power and performance from your kit.
4. K&N suggests checking the air filter element periodically for excessive dirt build-up. When the element becomes covered in dirt (or once a year), service it according to the instructions on the Recharger service kit, part number 99-5050 or 99-5000.